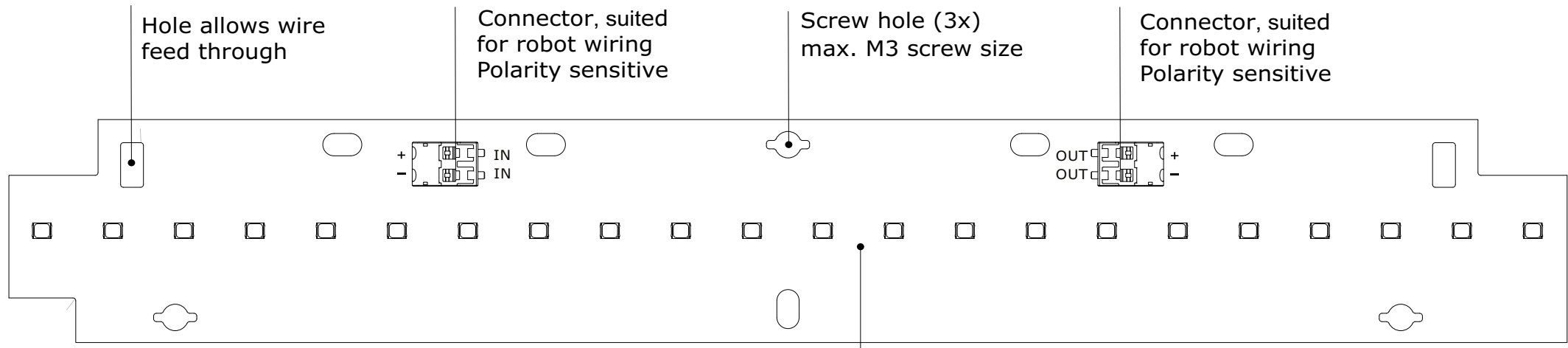
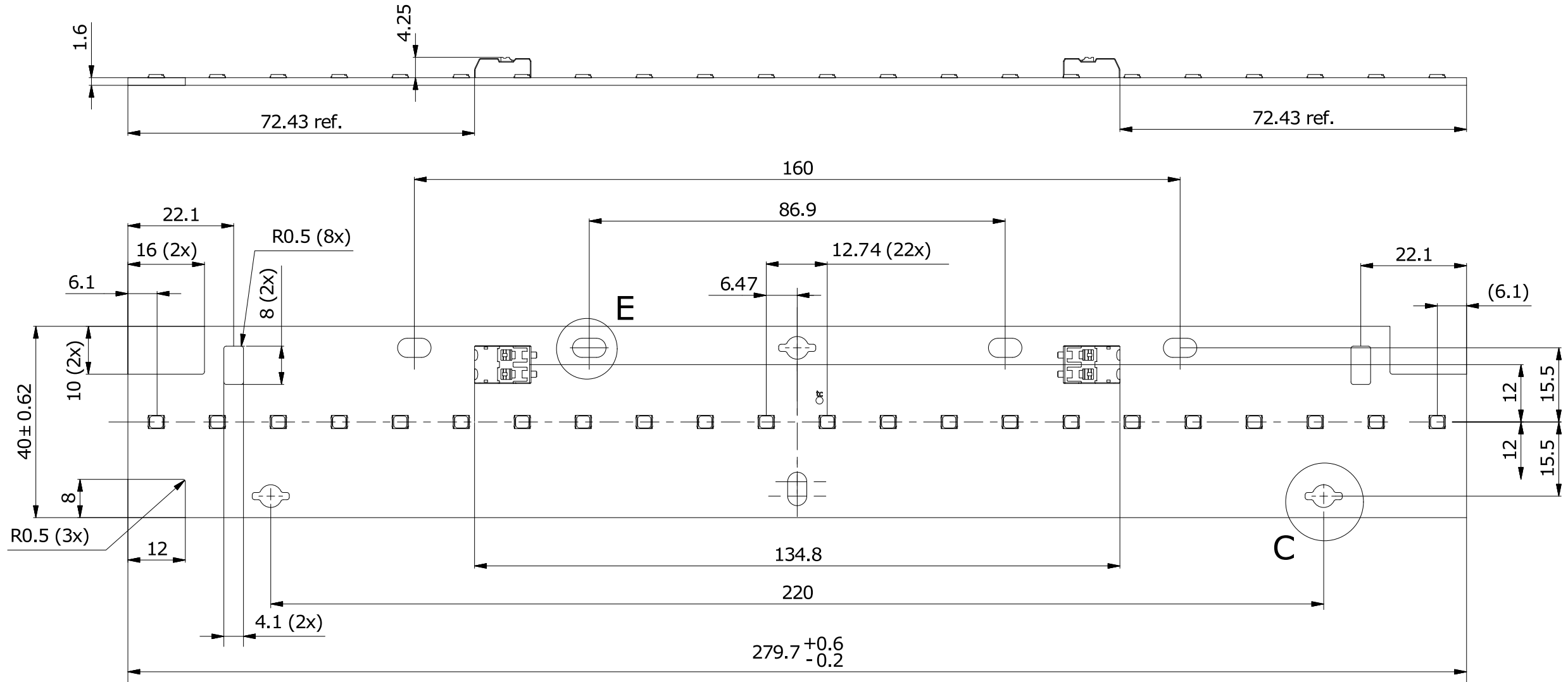


1 2 3 4 5 6 7 8

a
b
c
d
e
f



Hole allows wire feed through

Connector, suited for robot wiring
Polarity sensitive

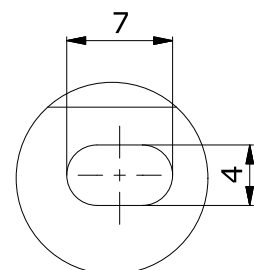
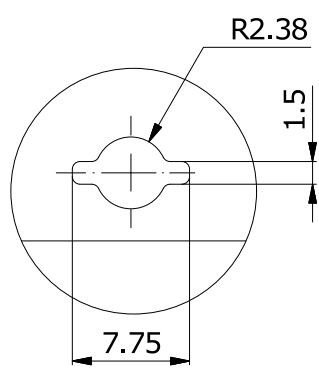
Screw hole (3x)
max. M3 screw size

Connector, suited for robot wiring
Polarity sensitive

Tc point

C (2 : 1) (3x)

E (2 : 1)



2D file available: Linear LED Strip 1ft

| TOLERANCES UNLESS OTHERWISE STATED | | PCB METAL | AL | Type | DK280-22LEDs-40x280mm | |
|------------------------------------|----------|------------------|-------|----------------------------|-----------------------|--|
| <200 m | ±0.20 mm | PCB THICKNESS | 1.6mm | NUMBER | | |
| ≥ 200 mm <400 m | ±0.25 mm | COPPER THICKNESS | 1 OZ | APPROVER | BELLUM | |
| ≥ 400 mm <600 m | ±0.30 mm | SURFACE | OSP | ASSESSOR | CELIO | |
| ≥ 600 mm | ±0.40 mm | SOLDERMASK | WHITE | DESIGNER | JOSE | |
| SCALE | 1:1 | VERSION NO. | V1.5 | MANKUN ELECTRONIC CO.,LTD. | | |